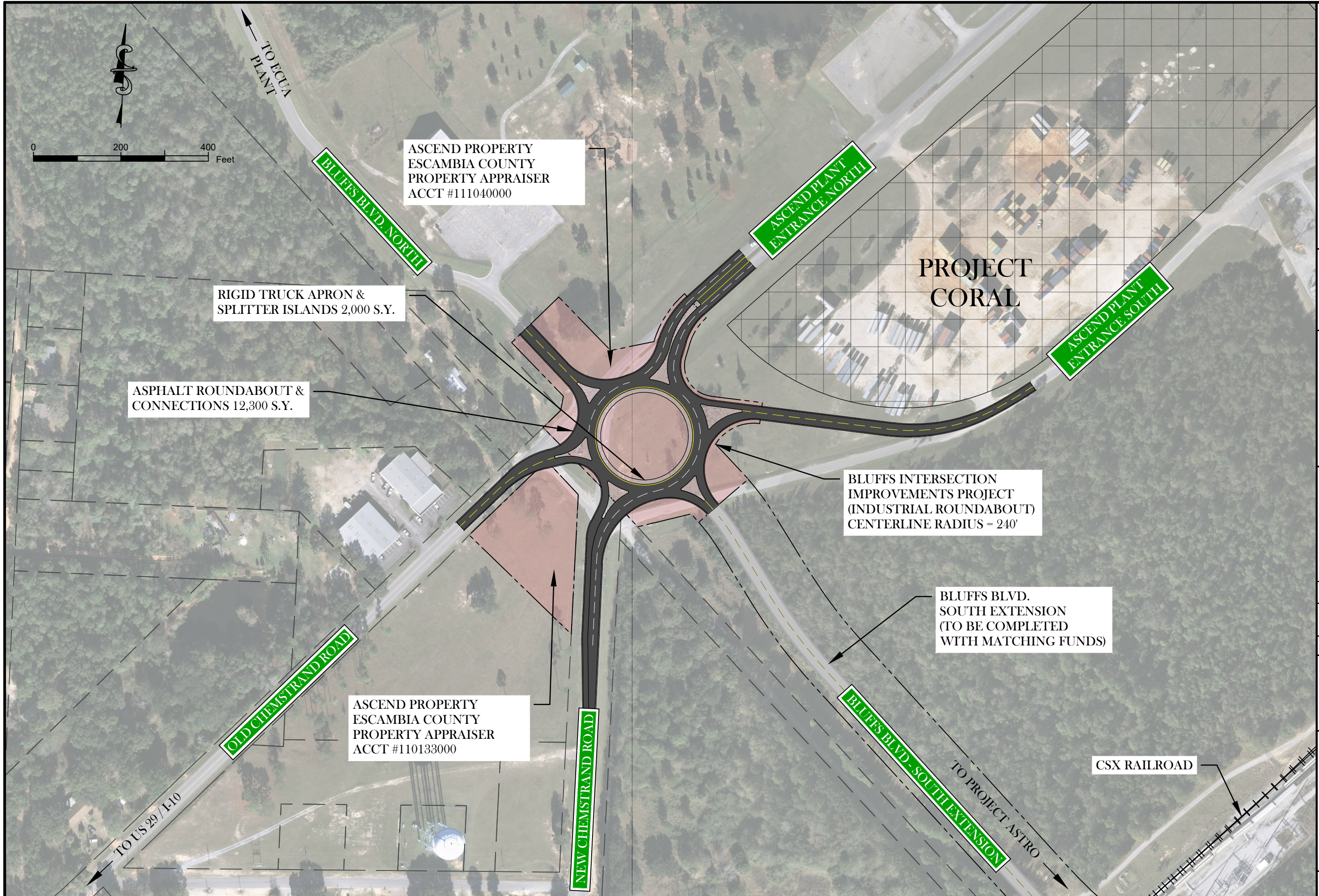


EXHIBIT "B" SHEET 2 OF 2



BASKERVILLE-DONOVAN, INC.
 Innovative Infrastructure Solutions
 448 W. MAIN ST. PENSACOLA, FL 32502 (850)438-8861
 ENGINEERING BUSINESS: EB-0000340
 Pensacola - Panama City Beach - Tallahassee - Mobile
This drawing is the property of BASKERVILLE-DONOVAN, INC. and is not to be reproduced in whole or in part. It is not to be used on any other project and is to be returned upon request.

BLUFFS INTERSECTION IMPROVEMENTS PROJECT

PROJECT NO:	NO.	DATE	APPR.	REVISION/ACTION TAKEN
114503.01				
DESIGNED BY: JPB				
DRAWN BY: JPB				
CHECK'D BY: FDZ				
PROJ. MGR: MCL				
DATE: 8/20/2019				

**EXHIBIT B
 PROJECT OVERVIEW**

SHEET
 2 OF 2

K:\1145 Bluffs 114503.01 Bluffs Ph2 2018\DWG\jpb_working\JF-New_Roundabout_Concept.dwg, Jun 24, 2020 - 3:09:59PM, jfrick